

ORIGINAL OYSTER HOUSE SINCE 1948
Over \$75 in Free Offers
SEE BACK FOR DETAILS

2015 Oyster TRAILBLAZER CALENDAR

\$15

Proceeds benefit Oyster Restoration & Environmental Education. Discover the Gulf Coast's Oyster Trail inside!



What we need are good Oyster New Year's Resolutions, how about...

- #1. No more name calling especially bottomfeeder, shrimp, crabby or crusty
- #2. Drink more water
- #3. Share your reef
- #4. Eat more plankton

HAPPY NEW YEAR!

HAPPY NEW YEAR!





DECEMBER 2014
 S M T W T F S
 1 2 3 4 5 6
 7 8 9 10 11 12 13
 14 15 16 17 18 19 20
 21 22 23 24 25 26 27
 28 29 30 31

January 2015

FEBRUARY 2015
 S M T W T F S
 1 2 3 4 5 6 7
 8 9 10 11 12 13 14
 15 16 17 18 19 20 21
 22 23 24 25 26 27 28

SUN | MON | TUES | WED | THURS | FRI | SAT

	<p><i>Original</i> Eastern Shore's First Oyster Trail Installation Sponsored by the Original Oyster House Artwork by Nancy Raia Alabama processes more than 3,000,000 pounds of oyster meat each year with a value in excess of 21 million dollars (valued in 2013)</p>	<p>The Oyster Trail is a fun, educational and public art treasure hunt throughout coastal Alabama. Large (4') fiberglass oysters, painted by local artists, can be found along the street, within parks, in lobbies, etc. Each oyster has a fact plaque that includes important information about the oyster's ecological and economic benefit to Mobile Bay.</p>	<p>Harvests of native oysters are now 1% or less of historical levels due to harvesting, disease, changes in water quality, and other factors. Overall oyster populations and the ecosystem services they provide, are similarly diminished. Courtesy of NOAA</p>
--	---	---	--

4	5	6 EPIPHANY	7	8 NEW YEARS DAY	9	10
11	12	13	14	15	16	17
18	19 MARTIN LUTHER KING JR.'S BIRTHDAY	20	21	22	23	24
25	26	27	28	29	30	31



JANUARY 2015
 S M T W T F S
 1 2 3
 4 5 6 7 8 9 10
 11 12 13 14 15 16 17
 18 19 20 21 22 23 24
 25 26 27 28 29 30 31

February 2015

MARCH 2015
 S M T W T F S
 1 2 3 4 5 6 7
 8 9 10 11 12 13 14
 15 16 17 18 19 20 21
 22 23 24 25 26 27 28
 29 30 31

SUN	MON	TUES	WED	THURS	FRI	SAT
 1	2 GROUNDHOG DAY	 3	4	5	6	7
8	9	10	 11	12 LINCOLN'S BIRTHDAY	13	14 VALENTINE'S DAY
15	16 PRESIDENT'S DAY	 17 MARDI GRAS	18 ASH WEDNESDAY	19	20	21
22 WASHINGTON'S BIRTHDAY	23	24	 25	26	27	28



Shelter from the Storm

Sponsored by
 Mobile Area
 Lodging Association
 Artwork by Danae Howe
 Female oysters can
 release more than
 20 million eggs in
 a single spawn.



Felix

Sponsored by
 Felix's Fish Camp
 & Bluegill
 Restaurant
 Artwork by
 Ameri'ca Jones
 There are more
 than 100 known
 species of oysters
 worldwide.



Lo Da

Sponsored by
 Downtown Mobile Alliance
 Artwork by
 Ginger Woechan
 Oysters spawn
 when water
 temperatures
 rise above 68° F.



Late

Sponsored by
 Project Cate
 Foundation &
 Rotary Club
 of Mobile
 Artwork by
 Kate Seawell
 Most oysters
 start as males.



CRICHTON

POT OF GUMBO



FEBRUARY 2015
 S M T W T F S
 1 2 3 4 5 6
 7 8 9 10 11 12 13 14
 15 16 17 18 19 20 21
 22 23 24 25 26 27 28

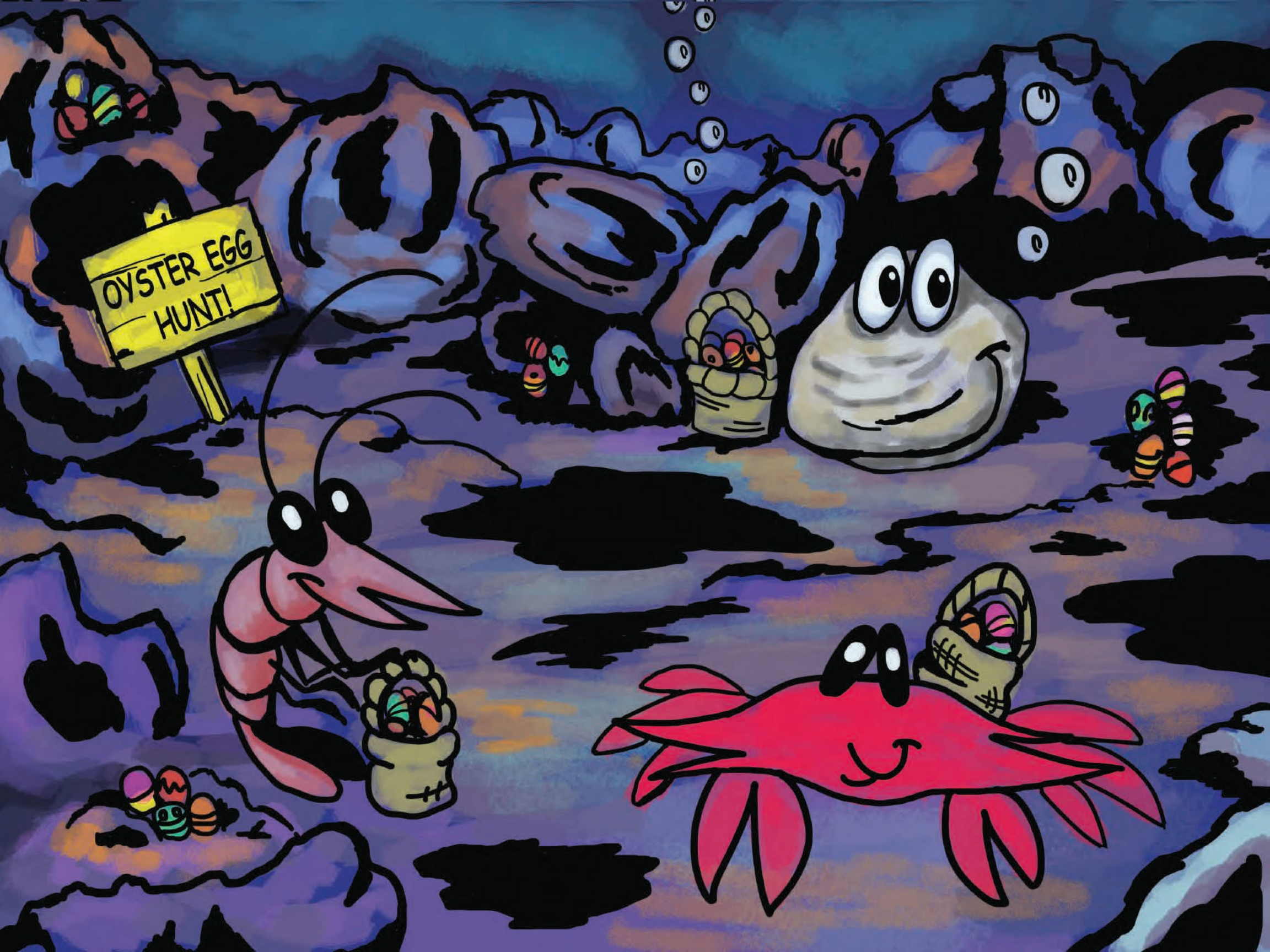
MARCH 2015
 S M T W T F S
 1 2 3 4
 5 6 7 8 9 10 11
 12 13 14 15 16 17 18
 19 20 21 22 23 24 25
 26 27 28 29 30

March 2015

SUN	MON	TUES	WED	THURS	FRI	SAT
 <p>MARCH OFFER Free Fried Cheese See back page for full details</p> <p>1</p>	2	3	4	○ 5	6	7
8 DAYLIGHT SAVINGS TIME BEGINS	9 NATIONAL CRAB DAY	10	11	12	☾ 13	14
15	16	17 ST. PATRICK'S DAY	18	19	● 20 FIRST DAY OF SPRING	21
22	23	24	25	26	☾ 27	28
29 PALM SUNDAY	30	31	 <p><i>Wintzell</i> Sponsored by Wintzell's Oyster House Artwork by Devlin Wilson In Mobile Bay, it takes 1-2 years for an oyster to grow to a harvestable size of three inches.</p>		 <p><i>Oyster Farming</i> Sponsored by Alabama Seafood Marketing Commission Artwork by Rick Tino In 1852, the Alabama Legislature mandated that oysters may only be harvested using tongs. Even with today's technological advances, this is still the way oysters are harvested in Alabama in order to sustainably manage the reefs.</p>	

Oysters are filter feeders, consuming phytoplankton (free-floating microscopic algae) and improving water quality while filtering the water for food. One oyster can filter more than 50 gallons of water in 24 hours. As generations of oysters settle on top of each other and grow, they form reefs that provide structured habitat for many fish species and crabs.





OYSTER EGG
HUNT!

March 2015
 S M T W T F S
 1 2 3 4 5 6 7
 8 9 10 11 12 13 14
 15 16 17 18 19 20 21
 22 23 24 25 26 27 28
 29 30 31

April 2015

May 2015
 S M T W T F S
 1 2
 3 4 5 6 7 8 9
 10 11 12 13 14 15 16
 17 18 19 20 21 22 23
 24 25 26 27 28 29 30
 31

SUN | MON | TUES | WED | THURS | FRI | SAT

The notion that oysters should not be eaten in “r”-less months—that is, months that occur during warm weather—may have started in the days when oysters were shipped without adequate refrigeration and could spoil. But today all that has changed and we can enjoy oysters twelve months a year.

APRIL FOOL'S DAY 1
 CHELSEA GARVIN SPIRIT AWARD SCHOLARSHIPS SUBMISSIONS

2
 MAUNDY THURSDAY

3
 GOOD FRIDAY

4
 HOLY SATURDAY

5
 EASTER SUNDAY

6

7

8

9

10

11

12

13

14

15

16

17

18

19

20

21

22
 EARTH DAY

23

24

25

26

27

28

29

30
 PUBLIC OYSTER REEFS CLOSE



Light of the Bay
 Sponsored by Hampton Inn & Suites
 Artwork by Riley Brenes
 Spat or “Seed Oyster” refers to juvenile oysters.



Oysters are bivalves (2 shells) and mollusks that are closely related to other animals such as scallops, clams and mussels.



Congratulations to winners Elena McLaughlin & Kellie Hastings of the 2014 Chelsea Garvin Spirit Award Scholarships.



April 2015
 S M T W T F S
 1 2 3 4
 5 6 7 8 9 10 11
 12 13 14 15 16 17 18
 19 20 21 22 23 24 25
 26 27 28 29 30

May 2015

May 2015
 S M T W T F S
 1 2 3 4 5 6
 7 8 9 10 11 12 13
 14 15 16 17 18 19 20
 21 22 23 24 25 26 27
 28 29 30

SUN | MON | TUES | WED | THURS | FRI | SAT

Most of the particles filtered by oysters are about 1-10 microns in diameter, about the same size as the single-celled phytoplankton (algae) that make up most of their diet. Filtration rate estimates range from 1.5 to 10.0 liters of water filtered per hour per gram (L h⁻¹g⁻¹) dry tissue weight, which is higher than the filtration rate of most other bivalves. Some of the particles filtered (including sediment and food) are ejected as "pseudofeces" without passing through the gut, because oysters need to ventilate their gills for more time than they need to feed.

Courtesy of NOAA



1 2

○ 3

4

5
 CINCO DE MAYO

6

7
 NATIONAL DAY OF PRAYER

8
 2013 HONOR FLIGHT SOUTH ALABAMA IX

9
 2012 HONOR FLIGHT SOUTH ALABAMA VII

10
 MOTHER'S DAY
 NATIONAL SHRIMP DAY

☾ 11
 2011 HONOR FLIGHT SOUTH ALABAMA V

12
 2010 HONOR FLIGHT SOUTH ALABAMA III

13
 2009 HONOR FLIGHT SOUTH ALABAMA I

14
 ASCENSION DAY

15

16

17

● 18

19

20

21

22

23

24
 PENTECOST

☾ 25
 MEMORIAL DAY

26

27

28

29

30

31



The Mobile Bay Oyster Gardening Program is a volunteer-based project focusing on education, restoration, enhancement and research by bringing the reef to the people.

Beginning in 2001 as part of a Master's degree project for planting, volunteer gardeners have grown more than one half million advanced stocker oysters for planting on restoration reef sites in and around Mobile Bay.

OYSTER
Gardening
BEGINS



MAY 2015						
S	M	T	W	T	F	S
			1	2		
3	4	5	6	7	8	9
10	11	12	13	14	15	16
17	18	19	20	21	22	23
24	25	26	27	28	29	30
31						

JUNE 2015						
S	M	T	W	T	F	S
			1	2	3	4
5	6	7	8	9	10	11
12	13	14	15	16	17	18
19	20	21	22	23	24	25
26	27	28	29	30	31	

June 2015

SUN	MON	TUES	WED	THURS	FRI	SAT
 <p>JUNE OFFER Free Hush Puppies See back page for full details</p>	1	☉	2	3	4	5
7	8	☾	9	10	11	12
14 FLAG DAY	15	☀	16	17	18	19
21 FIRST DAY OF SUMMER FATHER'S DAY	22	23	☾	24	25	26
28	29	30	 <p><i>Mobile on the Half Shell</i> Sponsored by Mobile Bay Convention & Visitors Bureau Artwork by Lucy Gafford Oyster larvae are free swimming for 10 to 20 days.</p>		 <p><i>Serving the Port First & Last</i> Sponsored by Mobile Bar Pilots, LLC Artwork by Ardith Goodwin Oyster larvae become oyster "spat" when they attach to a hard substrate.</p>	
<p>The main predators on oyster larvae are other filter feeders, especially comb jellies (Mnemiopsis, Beroe). The main predators of adults include cownose rays, black drum, and oyster drills. Crabs, worms, and boring sponges may also prey on adults.</p> <p>Courtesy of NOAA</p>						



HONOR FLIGHT
SOUTH ALABAMA

DR. BARRY BOOTH

60

Happy Independence Day

Honor

Sponsored by
Original Oyster House
Inspired by Dr. Barry Booth
Artwork by America Jones

July 2015



S	M	T	W	T	F	S
1	2	3	4	5	6	7
8	9	10	11	12	13	14
15	16	17	18	19	20	21
22	23	24	25	26	27	28
29	30	31				

July 2015

August 2015

S	M	T	W	T	F	S
1	2	3	4	5	6	7
8	9	10	11	12	13	14
15	16	17	18	19	20	21
22	23	24	25	26	27	28
29	30	31				

From 2008 thru 2013 Honor Flight South Alabama honored 957 WW II Vets with a visit to their Memorial in Washington DC. Our thanks to Dr. Barry L Booth and the entire honor-flight team of guardians, donors and volunteers. The "greatest heroes of our time" received the recognition they deserved for saving our nation and the world.

SUN	MON	TUES	WED	THURS	FRI	SAT
			1	2	3	4 INDEPENDENCE DAY
5	6	7	8	9	10	11 OYSTER TRAIL BIRTHDAY
12	13	14	15	16	17	18
19	20	21	22	23	24	25
26	27	28	29	30	31	



Unveiling Honor with Dr. Barry Booth, HFSA Guardians and participants, our WW II heroes.

"The world's your oyster"

comes from Shakespeare's *Merry Wives of Windsor*. "The world's mine oyster. Which I with sword will open."

The verb 'to shuck', meaning to remove the shell from an oyster, was first recorded in 1881.





Welcome Back
to School!
My Name is
Ms. Manatee

Oyster Drills are major predators of oysters.

DUNCE

JULY 2015
 S M T W T F S
 1 2 3 4
 5 6 7 8 9 10 11
 12 13 14 15 16 17 18
 19 20 21 22 23 24 25
 26 27 28 29 30 31

August 2015

AUGUST 2015
 S M T W T F S
 1 2 3 4
 5 6 7 8 9 10 11 12
 13 14 15 16 17 18 19
 20 21 22 23 24 25 26
 27 28 29 30

SUN | MON | TUES | WED | THURS | FRI | SAT

Oysters are sessile (immobile) mollusks that were commonly found clinging onto hard surfaces (shipwrecks, debris and harbor walls, etc.) around the world. More than 80% of the world's oyster reefs have been lost.



1

2

3

4

5

NATIONAL OYSTER DAY



6

7

8

9

10

11

12

13



14

15

16

17

18

19

20

21



22

23

24

25

26

27

28



29

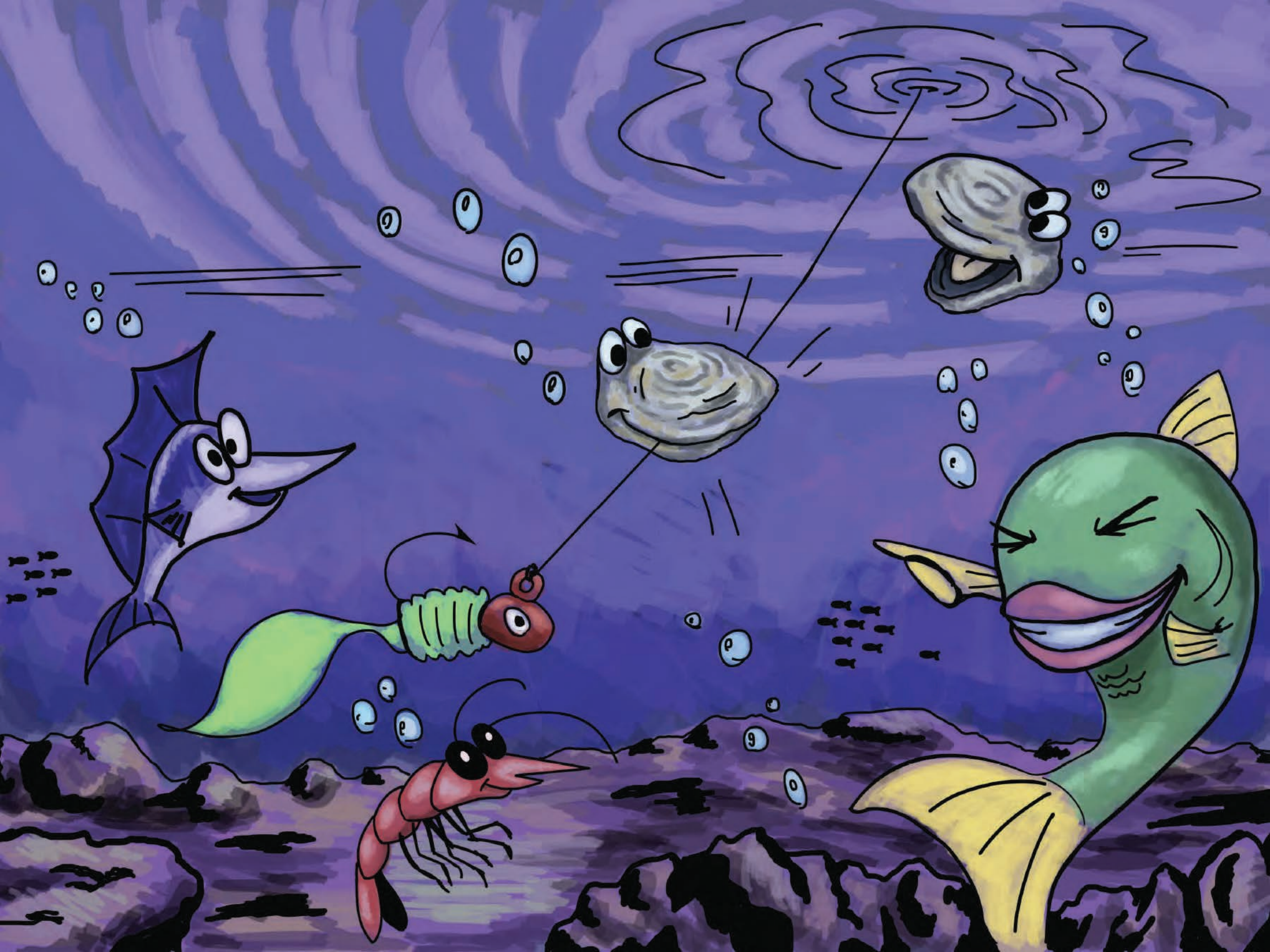
30

31

Oysters are found in estuarine environments all around the world but are more commonly found in more temperate regions where the shallows are richer in nutrients.



Oysters are preyed upon by a number of different predators both in the sea and on the land including humans, birds, marine mammals, sea turtles and various species of fish and other shellfish. Oyster drills are a major predator of oysters in Mobile Bay.





SEPTEMBER 2014
 S M T W T F S
 1 2 3 4 5
 6 7 8 9 10 11 12
 13 14 15 16 17 18 19
 20 21 22 23 24 25 26
 27 28 29 30

October 2015

NOVEMBER 2014
 S M T W T F S
 1 2 3 4 5 6 7
 8 9 10 11 12 13 14
 15 16 17 18 19 20 21
 22 23 24 25 26 27 28
 29 30

SUN | MON | TUES | WED | THURS | FRI | SAT

Oyster Gardening began in the Chesapeake Bay. Borrowing from the aquaculture approach, the Mobile Bay Oyster Gardening Program uses hatchery spawned oyster larvae from the Auburn University Shellfish Laboratory. Oyster gardeners grow the juvenile oysters (spat) in small gardens from late June to November.



1 PUBLIC OYSTER REEFS OPEN (SUBJECT TO CLOSURES)
 2
 3

4 5 6 7 8 9 10

11 12 COLUMBUS DAY 13 14 15 16 17

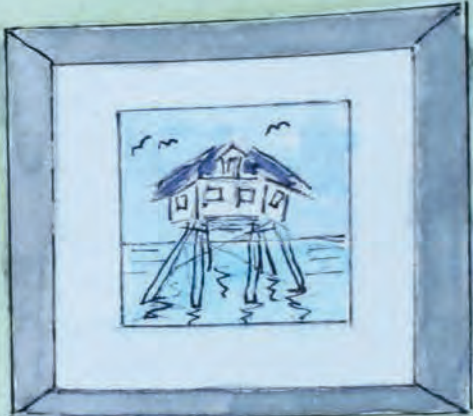
18 19 20 21 22 23 24

25 26 27 28 29 30 31 HALLOWEEN



Juvenile oysters are set on hard substrate, such as adult oyster shells, and form clumps. From late June to November, the juvenile oysters grow from a few millimeters to more than 2 inches in oyster gardens. The gardens are suspended from the Oyster Gardener's wharf and remain off the bottom away from pilings. Increased water flow brings more food and oxygen while removing wastes and improving the growth rates.

The oyster larvae develop within a matter of hours, and spend their first few weeks swimming around until they finally settle and attach themselves to hard surfaces, where they remain for the rest of their lives.



Let me
out of
here!

*Harold
Rockefeller*



October 2015
 S M T W T F S
 1 2 3
 4 5 6 7 8 9 10
 11 12 13 14 15 16 17
 18 19 20 21 22 23 24
 25 26 27 28 29 30 31

November 2015

November 2015
 S M T W T F S
 1 2 3 4 5
 6 7 8 9 10 11 12
 13 14 15 16 17 18 19
 20 21 22 23 24 25 26
 27 28 29 30 31

SUN	MON	TUES	WED	THURS	FRI	SAT
ALL SAINTS DAY <i>1</i> DAYLIGHT SAVINGS TIME ENDS	<i>2</i>	<i>3</i>	<i>4</i>	<i>5</i>	<i>6</i>	<i>7</i>
<i>8</i>	<i>9</i>	<i>10</i>	VETERAN'S DAY <i>11</i>	<i>12</i>	<i>13</i>	<i>14</i>
<i>15</i>	<i>16</i>	<i>17</i>	<i>18</i>	<i>19</i>	<i>20</i>	<i>21</i>
<i>22</i>	<i>23</i>	<i>24</i>	<i>25</i>	THANKSGIVING DAY <i>26</i>	<i>27</i>	<i>28</i>

29
FIRST SUNDAY OF ADVENT

30



NOVEMBER OFFER
Free Fried Pickles
See back page for full details



Tip O.
Sponsored by Mobile Bay National Estuary Program
Artwork by Dyann Muñoz
An adult oyster can filter up to four gallons of water per hour.



Down on the Bayou
Sponsored by The Bayou La Batre Area Chamber of Commerce
Artwork by Verna Bryant
Some of the earliest written (Sallust) records of gathering oysters come from Rome around 50BC.



Restoration Works
Sponsored by 100-1000 Restore Coastal Alabama
Artwork by Melissa Shaver
Oyster drills are a major predator of oysters in Mobile Bay.



November 2015						
S	M	T	W	T	F	S
1	2	3	4	5	6	7
8	9	10	11	12	13	14
15	16	17	18	19	20	21
22	23	24	25	26	27	28
29	30					

December 2015

January 2016						
S	M	T	W	T	F	S
1	2	3	4	5	6	7
8	9	10	11	12	13	14
15	16	17	18	19	20	21
22	23	24	25	26	27	28
29	30	31				

SUN	MON	TUES	WED	THURS	FRI	SAT	
<p>If you have a sip of curiosity for a briny brew, there is Oyster Stout. Although very trendy, Oyster Stout is steeped in history.</p> 		1	2	3	4	5	
	6	7 PEARL HARBOR REMEMBRANCE HANUKKAH BEGINS	8	9	10	11	12
	13	14	15	16	17	18	19
	20	21	22 FIRST DAY OF WINTER	23	24 CHRISTMAS EVE	25 CHRISTMAS	26
	27	28	29	30	31 NEW YEAR'S EVE	 <p><i>Bountiful Harvest</i> Sponsored by The Alabama Seafood Marketing Commission Artwork by Margie Delcambre Alabama has 6,000 acres of historical oyster reefs that produce millions of pounds of oysters annually. The oyster resources are managed by the Marine Resources Division.</p>	
 <p>Mention of oyster ice cream is made in Mark Twain's novel <i>The Adventures of Tom Sawyer</i>. The ice cream flavor was a favorite by the author.</p>		<p>Oysters can change sex, typically from male to female as they age.</p>		<p>Oyster liquor is the natural juice inside the shell when you open it. That juice is precious and tastes amazing which is why it's referred to as liquor.</p>			



Alex VanArsdale
Calendar Illustrator



P.J. Waters
Oyster Trail Coordinator



Marie Dyson
Oyster Trail Coordinator



Joe Roszkowski
CEO/President
Original Oyster House



David Dekle
Vice President
Original Oyster House



Mary Lou Roszkowski
Vice President Operations
Original Oyster House



Cecilia Mace
Marketing Director
Original Oyster House



Sr. Marilyn Graf, RSM
Volunteer



Flora Chamberlain
Volunteer

About the Artist:

Local artist Alex VanArsdale illustrated the 2015 Oyster Trailblazer Calendar concepts developed by the calendar committee. With a background specializing in character design and drawing, VanArsdale brought to life the wonders of our oyster world. He enjoys painting, writing and music, and is a mastermind at giving personality to bivalves. Visit VanArsdale's web-blog at goodgriffins.blogspot.com or his web-comic at superstrike10.blogspot.

Painting Characters

Local artists Lyn Fogarty and Cecilia Mace painted several of VanArsdale's illustrations. The calendar was to be traditionally painted throughout but under time restraints, only 6 months (February, March, June, July, August and Nov.) were painted by Fogarty & Mace. VanArsdale colored the other 6 on his computer. The combination of old versus new technique adds a great variety to his work. Check out Fogarty's other work at etsy.com/shop/lynfogarty

About the Oyster Trailblazer Calendar Committee

The concept of the Oyster Trailblazer Calendar came about after the successful sponsorships of two Oyster Trail Sculptures. "Original" became the first Eastern Shore Oyster Trail Sculpture unveiled. Painted by local artist Nancy Raia, Original sits in front of the Mobile Causeway's Original Oyster House and captures the beautiful life on the Mobile Delta. "Honor", became the second Original Oyster House sponsored Oyster Trail Sculpture unveiled at its Gulf Shore's location. Inspired by Dr. Barry Booth, founder of Honor Flight South Alabama, and painted by local artist, Ameri'ca Jones, Honor pays tribute to our military who serves while capturing HFSA's historical journey on the [FACT] plaque.

Recognizing the valuable work of P.J. Waters and Marie Dyson who coordinate the Oyster Trail, Joe & Mary Lou Roszkowski and David and Jane Dekle, the co-owners of the Original Oyster House restaurants, wanted to do their part in helping educate the community about Oyster Reef Restoration, Oyster Gardening and Oysters in general. The sponsorship of the calendar in-

cludes \$75 in free monthly offers from the restaurants and Geez Louise Boutique in Gulf Shores. The calendar also supports local schools in raising classroom funds to support education (e.g. field trips, equipment, science & art supplies, etc.) as well as raising funds for Oyster restoration.

"The Oyster Trailblazer Calendar is like an Oyster 101 and we as a community must protect our oyster reef for generations to come," P.J. Waters stated. "Inspiring more Oyster Trailblazers is really what we hope the Calendar can accomplish. We want kids especially to recognize the valuable treasures oysters bring to our ecosystem and through science, collaboration and gardening, how we can help restore the reef in the Gulf."

The Oyster Trailblazer Calendar became a labor of love—love of oysters and the many scientist and volunteers who are dedicated to protecting and enhancing them. Volunteers including Marie Dyson, Cecilia Mace, Sr. Marilyn Graf, RSM and Flora Chamberlain worked closely with schools in support of education, environmental stewardship and giving back.

Adopt an Oyster Garden

Help restore oysters along our coast, learn more about marine ecology & hear about the ongoing research



The Mobile Bay Oyster Gardening Program would love to have your help with our mission to educate, restore oysters (and the habitat that they create), and involve citizens in ongoing research.

Who can adopt an oyster garden?

Anyone who wants to help!
They also make excellent gifts!

Why adopt an oyster garden?

We are lucky enough to have lots of enthusiastic volunteers who care for the gardens, but we need your help to keep us going. Your donation will be used to purchase the necessary materials and help this program continue to provide nearly 600,000 oysters to date for restoration and enhancement efforts along our coast.

What do you get?

- A certificate of recognition as an official Oyster Garden Adopter
- Electronic subscription to our monthly newsletter to hear about the program, ongoing oyster research and other tidbits
- A letter documenting your tax exempt donation

How do you adopt an oyster garden?

Adoptions can also be made online at www.oystergardening.org.

Giving Back

Since 1983, the Original Oyster House has supported charitable organizations including local schools, athletics, churches, healthcare programs, restoration and renewable energy programs. Since 2006, the Original Oyster House has awarded two \$1,000 Chelsea Garvin Spirit Award scholarships each year to seniors of Baldwin County high schools in memoriam of Chelsea Garvin who died in 2005. The Original Oyster House pays tribute to those killed in the 9/11 attacks by honoring first responders (our area Law Enforcement, Firefighters, Paramedics and Sheriff's officers) with a Free Lunch on September 11.



"Faith in God is our foundation. The Original Oyster House is a family; from the owners to the management, to the employees and ultimately to our customers! We support the communities and families we serve through high levels of involvement, outreach services and enduring relationships; building Original Oyster House into a cornerstone of our communities. We are very blessed to live and work in one of the most beautiful parts of the world. We respect and value our resources, community and families and will wisely use our talents and resources to help improve communities and the global environment."

—The Original Oyster House Family

For more information about our Giving Back Program, please visit www.originaloysterhouse.com/givingback

OVER \$75 OF *Oyster Trailblazer Offers*

\$4.99 value

JANUARY OFFER

Free Cup of Gumbo
with an appetizer or entree purchase



No Take Outs Available.
OFFER NOT VALID WITH ANY OTHER COUPONS,
DISCOUNTS OR SPECIALS. Must present certificate for offer.
Valid on Jan. 1 thru Jan. 31, 2015. Oyster Trailblazer Calendar

\$10.99 value

FEBRUARY OFFER

Buy 1 Get 1 Entree Free



Purchase one DINNER entrée at regular price and receive the second DINNER entrée of equal or lesser value (up to \$10.99) Free.
No Take Outs Available.
OFFER NOT VALID WITH ANY OTHER COUPONS,
DISCOUNTS OR SPECIALS. Must present certificate for offer.
Valid on Feb. 1 thru Feb. 28, 2015. Oyster Trailblazer Calendar

\$7.99 value

MARCH OFFER

Free Fried Cheese
with an Entree purchase



No Take Outs Available.
OFFER NOT VALID WITH ANY OTHER COUPONS,
DISCOUNTS OR SPECIALS. Must present certificate for offer.
Valid on March 1 thru March 31, 2015. Oyster Trailblazer Calendar

\$4.50 value

APRIL OFFER

Free Peanut Butter Pie
with an appetizer or entree purchase



No Take Outs Available.
OFFER NOT VALID WITH ANY OTHER COUPONS,
DISCOUNTS OR SPECIALS. Must present certificate for offer.
Valid on April. 1 thru April. 30, 2015. Oyster Trailblazer Calendar

\$2.99 value

MAY OFFER

Free Salad Bar
with an entree purchase



No Take Outs Available.
OFFER NOT VALID WITH ANY OTHER COUPONS,
DISCOUNTS OR SPECIALS. Must present certificate for offer.
Valid on May 1 thru May 31, 2015. Oyster Trailblazer Calendar

\$4.99 value

JUNE OFFER

Free Hush Puppies
with an appetizer or entree purchase



No Take Outs Available.
OFFER NOT VALID WITH ANY OTHER COUPONS,
DISCOUNTS OR SPECIALS. Must present certificate for offer.
Valid on June 1 thru June 30, 2015. Oyster Trailblazer Calendar

\$4.50 value

JULY OFFER

Free Key Lime Pie
with an appetizer or entree purchase



No Take Outs Available.
OFFER NOT VALID WITH ANY OTHER COUPONS,
DISCOUNTS OR SPECIALS. Must present certificate for offer.
Valid on July 1 thru July 31, 2015. Oyster Trailblazer Calendar

\$10.99 value

AUGUST OFFER

Buy 1 Get 1 Entree Free



Purchase one DINNER entrée at regular price and receive the second DINNER entrée of equal or lesser value (up to \$10.95) Free.
No Take Outs Available.
OFFER NOT VALID WITH ANY OTHER COUPONS,
DISCOUNTS OR SPECIALS. Must present certificate for offer.
Valid on Aug. 1 thru Aug. 31, 2015. Oyster Trailblazer Calendar

\$10.99 value

SEPT. OFFER

Buy 1 Get 1 Entree Free



Purchase one DINNER entrée at regular price and receive the second DINNER entrée of equal or lesser value (up to \$10.95) Free.
No Take Outs Available.
OFFER NOT VALID WITH ANY OTHER COUPONS,
DISCOUNTS OR SPECIALS. Must present certificate for offer.
Valid on Sept. 1 thru Sept. 30, 2015. Oyster Trailblazer Calendar

\$4.99 value

OCTOBER OFFER

Free Cup of Gumbo
with an appetizer or entree purchase



No Take Outs Available.
OFFER NOT VALID WITH ANY OTHER COUPONS,
DISCOUNTS OR SPECIALS. Must present certificate for offer.
Valid on Oct. 1 thru Oct. 31, 2015. Oyster Trailblazer Calendar

\$6.99 value

NOVEMBER OFFER

Free Fried Pickles
with an Entree purchase



No Take Outs Available.
OFFER NOT VALID WITH ANY OTHER COUPONS,
DISCOUNTS OR SPECIALS. Must present certificate for offer.
Valid on Nov. 1 thru Nov. 30, 2015. Oyster Trailblazer Calendar

\$4.50 value

DECEMBER OFFER

Free Bread Pudding
with an Entree purchase



No Take Outs Available.
OFFER NOT VALID WITH ANY OTHER COUPONS,
DISCOUNTS OR SPECIALS. Must present certificate for offer.
Valid on Dec. 1 thru Dec. 31, 2015. Oyster Trailblazer Calendar

Great value

GEEZ LOUISE OFFER

10% off Entire Purchase



Valid on Jan. 1 thru Dec. 2015. Oyster Trailblazer Calendar
OFFER NOT VALID WITH ANY OTHER COUPONS,
DISCOUNTS OR SPECIALS. Must present certificate for offer.

Great value

OYSTER TRAIL PACK

and Oyster Garden Newsletter

Must mail in certificate with name & e-mail to:
P.J. Waters, 118 North Royal Street Suite 800, Mobile, AL 36602.
NOT VALID WITH ANY OTHER COUPONS,
DISCOUNTS OR SPECIALS.



up to a \$6 value

BATTLESHIP ALABAMA

One Free Child Admission

with the Purchase of One Regularly Priced Adult Admission
To USS ALABAMA Battleship Memorial Park
Offer not valid with any other discounts or specials. 1 coupon per person
per visit. Valid Thru December 31, 2015. Oyster Trailblazer Calendar
2703 Battleship Pkwy - Mobile - (251) 433-2703

